



Thaw and Culture Details

Cell Line Name	SCRPO302i
WiCell Lot Number	DB42682
Provider	The Scripps Research Institute – Laboratory of Dr. Eric Topol
Banked By	Gladstone Institutes – Laboratory of Dr. Sheng Ding
Thaw and Culture Recommendations	WiCell recommends thawing 1 vial into 4 wells of a 6 well plate. WiCell recommends thawing using ROCK Inhibitor for best results.
Culture Platform	Feeder Independent
	Medium: mTeSR™1
	Matrix: Matrigel®
Protocol	WiCell Feeder Independent mTeSR™1
Passage Number	p11 These cells were cultured for 11 passages after colony picking prior to freeze. Add +1 to the passage number to best represent the overall passage number of the cells at thaw.
Date Vialied	06-May-2016
Vial Label	C00103, Passage 11, May-06-2016
Biosafety and Use Information	Appropriate biosafety precautions should be followed when working with these cells. The end user is responsible for ensuring that the cells are handled and stored in an appropriate manner. WiCell is not responsible for damages or injuries that may result from the use of these cells. Cells distributed by WiCell are intended for research purposes only and are not intended for use in humans.

Testing Performed by WiCell

Test Description	Test Provider	Test Method	Test Specification	Result
Karyotype by G-banding	WiCell	SOP-CH-003	Expected karyotype	See Report
Post-Thaw Viable Cell Recovery	WiCell	SOP-CH-305	Recoverable attachment after passage	Pass
Identity by STR	UW Translational Research Initiatives in Pathology Laboratory	PowerPlex 16 HS System by Promega	Defines STR profile of deposited cell line	Pass
Sterility	Steris	ST/07	Negative	Pass
Mycoplasma	WiCell	SOP-CH-044	Negative	Pass

Testing Reported by Provider

The Provider stated that some or all of the additional analyses listed below may have been performed for this cell line. For more information, publication and dbGaP links, where available, are provided on the cell line specific web page on the WiCell website.

- HumanCore Exome Kit
- Methylation
- Tra1-60 marker expression via flow cytometry
- Infinium® Expanded Multi-Ethnic Genotyping Array (MEGA^{EX})



Approval Date	Quality Assurance Approval
12-September-2016	<p style="text-align: right;">4/23/2020</p> <p>X JKG</p> <hr/> <p><small>WiCell Quality Assurance Signed by: Gay, Jenna</small></p>

Date Reported: Monday, March 23, 2020

Cell Line: SCRP0302i-DB42682

Passage#: 14

Date of Sample: 3/16/2020

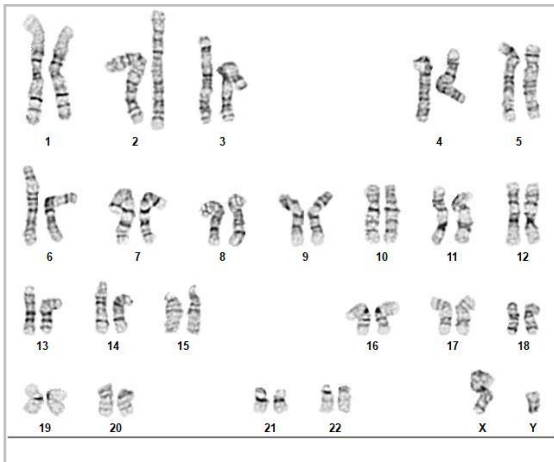
Specimen: Human iPSC

Results: 46,XY

Cell Line Sex: Male

Reason for Testing: LOT_RELEASE

Investigator: WiCell Stem Cell Bank, WiCell



Cell: 84

Slide: G01

Slide Type: Karyotype

Total Counted: 20

Total Analyzed: 8

Total Karyogrammed: 4

Band Resolution: 475 - 525

Interpretation:

This is a normal karyotype; no clonal abnormalities were detected at the stated band level of resolution.

Completed by: [REDACTED] CG(ASCP)

Reviewed and Interpreted by: [REDACTED], Ph.D.

Date: _____ **Sent By:** _____ **Sent To:** _____ **QC Review By:** _____

Limitations: This assay allows for microscopic visualization of numerical and structural chromosome abnormalities. The size of structural abnormality that can be detected is >3-10Mb, dependent upon the G-band resolution obtained from this specimen. For the purposes of this report, band level is defined as the number of G-bands per haploid genome. It is documented here as "band level", i.e., the range of bands determined from the four karyograms in this assay. Detection of heterogeneity of clonal cell populations in this specimen (i.e., mosaicism) is limited by the number of metaphase cells examined, documented here as "# of cells counted".

This assay was conducted solely for listed investigator/institution. The results of this assay are for research use only. Unless otherwise mutually agreed in writing, the services provided to you hereunder by WiCell Research Institute, Inc. ("WiCell") are governed solely by WiCell's Terms and Conditions of Service, found at www.wicell.org/privacyandterms. Any terms you may attach to a purchase order or other document that are inconsistent, add to, or conflict with WiCell's Terms and Conditions of Service are null and void and of no legal force or effect.

Short Tandem Repeat Analysis

Receive Date: 03/23/20

Report Sent: 04/21/20

Requestor: WiCell Characterization

Label on tube	MCW087i-U7112-WB67434 p.21 (80872)	CREM049i-BR21-1-DB66767 p.16 (80873)	CREM050i-BR23-1-DB66768 p.15 (80874)	WISCe011-A-40-WB67443 p.9 (80875)	SCRPO203i-DB42677 p.11 (80886)	CREM058i-BR43-1-DB66777 p.10 (80895)	CREM054i-BR33-1-DB66773 p.7 (80898)
Label on Report	Identifying information has been redacted to protect donor confidentiality. If more information is required, please, contact WiCell's Technical Support .						
conc (ng/μL)							
A260/280							
Assay Date							
File Name							
FGA							
TPOX							
D8S1179							
vWA							
Amelogenin							
Penta_D							
CSF1PO							
D16S539							
D7S820							
D13S317							
D5S818							
Penta_E							
D18S51							
D21S11							
TH01							
D3S1358							
Allelic Polymorphisms							
Matches*							
Comments							



HISTOLOGY - IHC - MOLECULAR – IMAGING
 Department of Pathology and Laboratory Medicine
 TRIP Laboratory (Molecular)
<https://research.pathology.wisc.edu/trip-home/>
 (608) 265-9168



Your Lab Partner
characterization@wicell.org
 (608) 316-4145

Short Tandem Repeat Analysis

Label on tube	Elf1-WB67433 p.16 (80899)	CREM024i-SS36-1- WB67440 p.12 (80952)	SCRPO302i-DB42682 p.14 (80953)	STAN312i-906C3-DB44421 p.16 (81039)
Label on Report	Identifying information has been redacted to protect donor confidentiality. If more information is required, please, contact WiCell's Technical Support .			
conc (ng/μL)				
A260/280				
Assay Date				
File Name				
FGA				
TPOX				
D8S1179				
vWA				
Amelogenin				
Penta_D				
CSF1PO				
D16S539				
D7S820				
D13S317				
D5S818				
Penta_E				
D18S51				
D21S11				
TH01				
D3S1358				
Allelic Polymorphisms				
Matches*				
Comments				



HISTOLOGY - IHC - MOLECULAR – IMAGING
 Department of Pathology and Laboratory Medicine
 TRIP Laboratory (Molecular)
<https://research.pathology.wisc.edu/trip-home/>
 (608) 265-9168



Your Lab Partner
 characterization@wicell.org
 (608) 316-4145

Short Tandem Repeat Analysis

Results: Based on the DNA submitted by WiCell Characterization Department dated and received on 03/23/20, these samples define the STR profiles of the human cell lines as indicated by name. The genotypic profiles comprise a range of 26-30 allelic polymorphisms across the 15 STR loci analyzed.

Interpretation: The concentration of DNA required to achieve an acceptable STR genotype (signal/ noise) was equivalent to that required for the standard procedure (~1 ng/amplification reaction) from human genomic DNA. These results suggests that the cells submitted correspond to the cell lines as named and were not contaminated with any other human cells or a significant amount of mouse feeder layer cells.

Sensitivity: Sensitivity limits for detection of STR polymorphisms unique to either this or other human cell lines is ~2-5%.

¹ For sample 80874 a microvariant exists at the D3S1358 loci with a size less than 11 but undefined due to the lack of sizing standard prior to 11 at this loci.

**Acknowledge TRIP in your publications, posters & presentations. For details, see:
<https://research.pathology.wisc.edu/acknowledging-trip/>**

* **Note:** The STR profile of the following sample is an exact match for the given sample/samples.

X *RMB*

Digitally Signed on 04/21/20

BA

TRIP Laboratory, Molecular

X *WMR*

Digitally Signed on 04/21/20

, PhD, Director / Co-Director

UWHC Molecular Diagnostics Laboratory / UWSMPH TRIP Laboratory

Testing was accomplished by analysis of human genetic polymorphisms at STR loci. This methodology has not yet been approved by the FDA and is for investigational use only.

Unless otherwise mutually agreed in writing, the services provided to you hereunder by WiCell Research Institute, Inc. ("WiCell") are governed solely by WiCell's Terms and Conditions of Service, found at <https://www.wicell.org/media.acux/ca76d97c-862a-43f3-b02a-ab2d1e619100>. Any terms you may attach to a purchase order or other document that are inconsistent, add to, or conflict with WiCell's Terms and Conditions of Service are null and void and of no legal force or effect.

Native Product Sterility Report



WiCell
504 S Rosa Road, Rm 101
Madison, WI 53719

SAMPLE #: 20030283
DATE RECEIVED: 05-Mar-20
TEST INITIATED: 06-Mar-20
TEST COMPLETED: 20-Mar-20

SAMPLE NAME / DESCRIPTION: MCW021i-50001743 WB67429
MCW084i-U2053 WB67427
MCW115i-U2143 WB67428
SCR5402i WB67430
MCW102i-UR117 WB67432
MCW108i-U2165 WB67431
CREM048i-BR3-1 DB66766
CREM049i-BR21-1 DB66767
CREM050i-BR23-1 DB66768
CREM061i-BT1-1 DB66780
CREM062i-BT2 DB66781
Elf1 WB67433
STAN133i-215C1 DB44608
STAN134i-215C2 DB44611
STAN291i-827C1 DB44304
STAN292i-827C2 DB44307
STAN251i-637C1 DB44371
STAN311i-906C1 DB44418
STAN312i-906C3 DB44421
STAN360i-465C2 DB44240
STAN088i-060C1 DB35739
STAN164i-352C1 DB35976
STAN165i-352C5 DB35979
STAN230i-533C1 DB35783
STAN231i-533C2 DB35786
(see remainder in comments)

UNIQUE IDENTIFIER: NA

TEST RESULTS:

# Tested	# Positives (Growth)	- Control
30	1	2 Negatives

Native Product Sterility Report



TEST SUMMARY:

# Samples	Media Type	Volume (mL)	Incubation Temperature (° C)	Incubation Duration (Days)
30	TSB	40	20-25	14
30	FTG	40	30-35	14

REFERENCE:

Processed according to LAB-003: Sterility Test Procedure

PD #:

000053

TEST METHODOLOGY:

USP - Direct Transfer

COMMENTS:

Sample # 20030283

Sample labeled ISMMS 827i C2P16 AP 030416 in Media Type TSB is positive.

Sample Name/Description continued:

SCRPO302i DB42682
SCRPO104i DB42002
SCRPO202i DB42005
SCRPO203i DB42677
SCRPO307i DB42014

REVIEWED BY

DATE

20 MAR 2020

Specific test results may not be indicative of the characteristics of any other samples from the same lot or similar lots. This test report shall not be reproduced, except in full, without prior written approval. Liability is limited to the costs of the tests. Results applied to samples as received.



Mycoplasma Assay Report

PCR-based assay performed by WiCell

WiCell

26Mar20

FORM SOP-CH-048.01

Version B Edition 01

Sample Name	Result	Comments/Suggestions
CREM057i-BR41-1-DB66776 (81043)	Negative	Band was not seen at 270bp, indicating the absence of mycoplasma.
SCRPO404i-DB42688 (81044)	Negative	Band was not seen at 270bp, indicating the absence of mycoplasma.
CREM056i-BR39-1-DB66775 (81045)	Negative	Band was not seen at 270bp, indicating the absence of mycoplasma.
CREM058i-BR43-1-DB66777 (81046)	Negative	Band was not seen at 270bp, indicating the absence of mycoplasma.
SCRPO203i-DB42677 (81047)	Negative	Band was not seen at 270bp, indicating the absence of mycoplasma.
SCRPO302i-DB42682 (81048)	Negative	Band was not seen at 270bp, indicating the absence of mycoplasma.
Positive (+) Control	Positive	
Negative (-) Control	Negative	

Reported by: [REDACTED] Cell Culture Specialist

Reviewed by: [REDACTED], Assistant Cell Culture Specialist

Unless otherwise mutually agreed in writing, the services provided to you hereunder by WiCell Research Institute, Inc. ("WiCell") are governed solely by WiCell's Terms and Conditions of Service, found at www.wicell.org/privacyandterms. Any terms you may attach to a purchase order or other document that are inconsistent, add to, or conflict with WiCell's Terms and Conditions of Service are null and void and of no legal force or effect.

A gel image is available upon request.